



DATA GROWTH

is skyrocketing in Hospitals

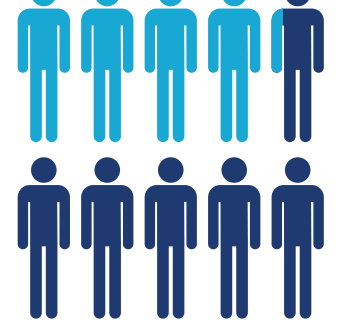


8 OUT OF 10



physicians now use electronic medical records, doubling the rate since 2009¹

41%



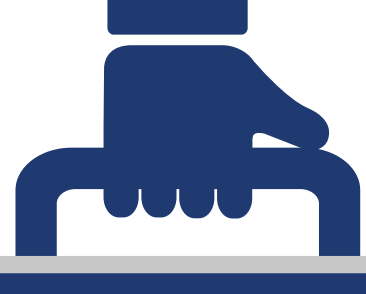
of Health Executives

Say their organization's data volume has grown more than 50% in one year²

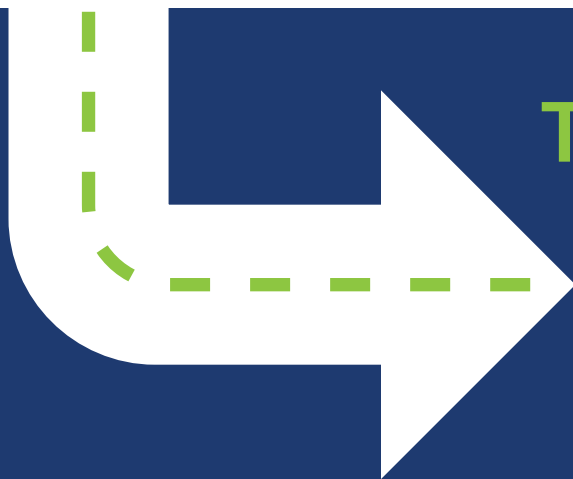
More than 1/2



of all health care customers say a positive experience includes access to Wi-Fi and other entertainment³



Nearly 70% of health care IT leaders say Bring Your Own Device policies will be fully supported by 2018⁴



This data demand is driving more frequent network upgrades



71%

of hospitals plan on completing a network upgrade within the next 24 months⁵

Every 3-5 years

hospitals add new active network equipment, but they often fail to upgrade their cabling

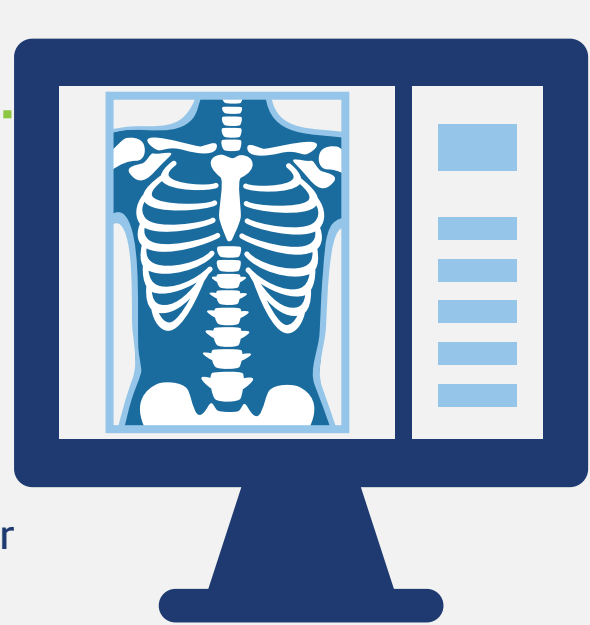


+ HOSPITAL

Hospitals need to make sure they install the Right Infrastructure to handle greater demand now and in the near future



2 Minutes, 40 Seconds:
The time it takes to access an MRI scan over a 1 GbE Network



16 Seconds:
The time it takes to access an MRI scan over a 10 GbE Network



Category 6A recommended by both TIA and BICSI

for new network installations throughout hospitals. Category 6A can support 10GbE and prepare hospitals for future network growth.

Leviton's Atlas-X1™ Cat 6A System

delivers the highest level of verified performance for mission-critical applications. From the data center to nurse stations, operating rooms, and patient rooms, Atlas-X1 keeps hospitals connected.



Learn more at Leviton.com/AtlasX1.

Sources:

¹ National Center for Health Statistics: "Adoption of Certified Health Record Systems and Electronic Information Sharing in Physician Offices: United States, 2013 and 2014", January 2016
² Accenture: "Top 5 eHealth Trends", 2015
³ Fierce Healthcare: "What Patients Really Want in a Hospital", July 2012
⁴ Healthcare Business Insights: "BYOD Strategy is the Key to Achieving the Five Rights of Clinical Communication", August 2015
⁵ InformationWeek HealthCare: "No Breathing Room", June 2014

